



# SÉRIE AN

## SISTEMA BATENTE TRADICIONAL

### Solução Económica

Sistema de batente para quem pretende um caixilho sem grandes preocupações de isolamento e estanquidade.

### Resultados do Ensaio do Tipo Inicial:

Tipo Ensaio	Resultados
Permeabilidade ao Ar	4
Estanquidade à Água	3A
Resistência à Pressão do Vento	B2
Durabilidade Mecânica	2
Coefficiente de Transmissão Térmica	3.9
Desempenho Acústico	32

Janela com perfis alumínio do Sistema NA composta por duas folhas móveis de batente, uma folha de ventilação e uma folha fixa.

**Dimensão da Janela:**  
3000\*2000 mm

### Soluções Construtivas:

- Fixos;
- Janelas e Portas;
- Basculantes;
- Projetantes;
- Vai e Vem.

### Capacidade de Vidro:

- Vidro Simples: 4 a 12mm
- Vidro Duplo: 12 a 28mm

### Vedantes:

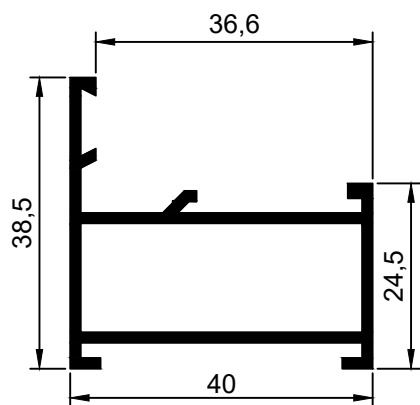
- Material em EPDM ou PVC em conformidade com a norma aplicável.

### Acessórios:

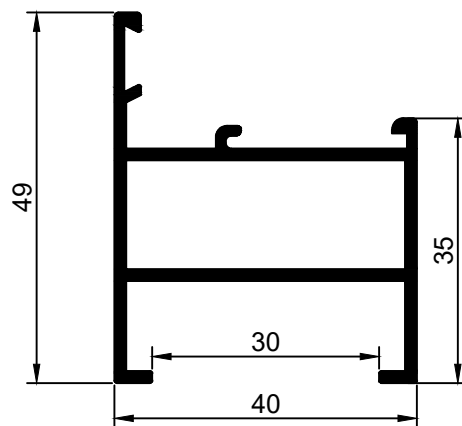
- Materiais em alumínio, zamac, aço inox e nylon em conformidade com a norma aplicável.



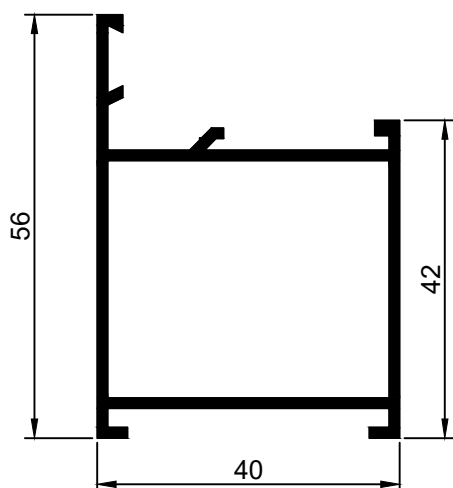
AN.01 *Aro Fixo*



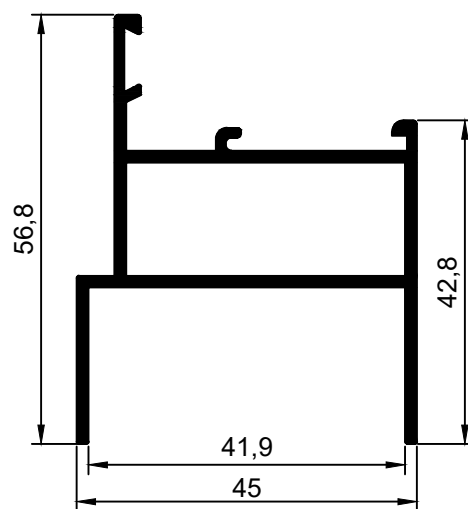
AN.04 *Aro Fixo*



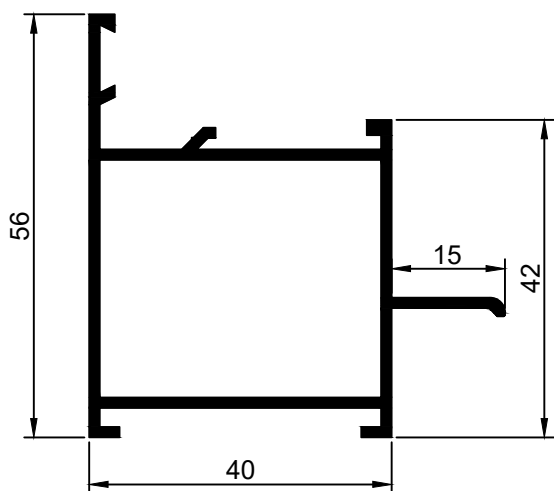
AN.03 *Aro Fixo*



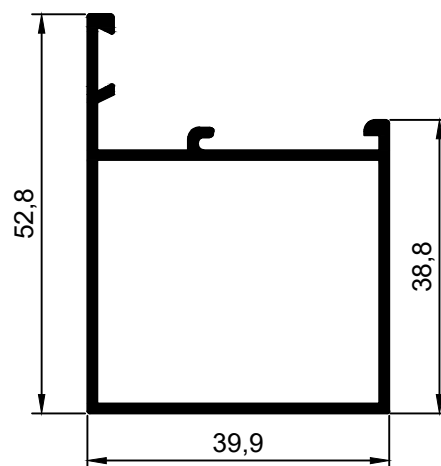
AN.02 *Aro Fixo*



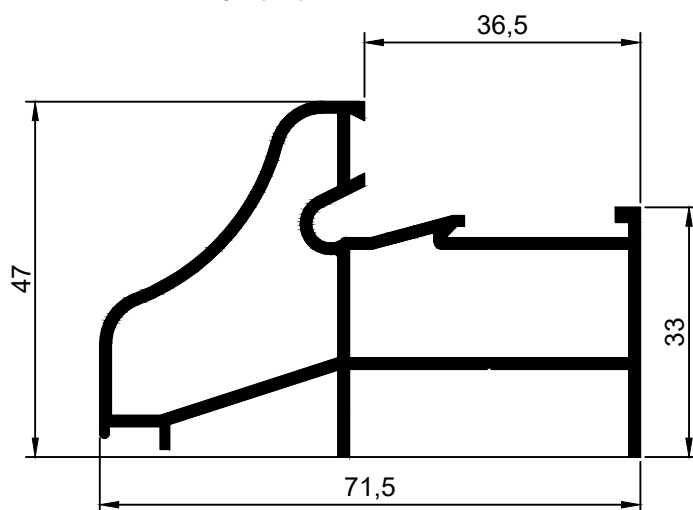
AN.05 *Aro Fixo*



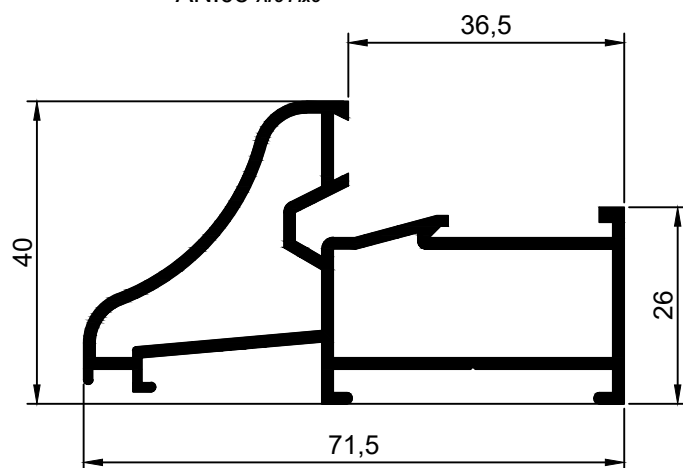
AN.06 *Aro Fixo*



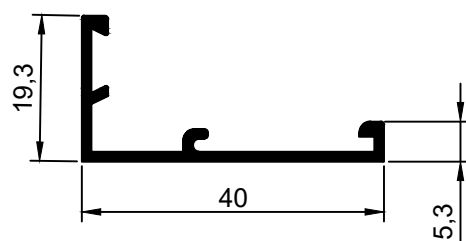
AN.10 *Aro Fixo*



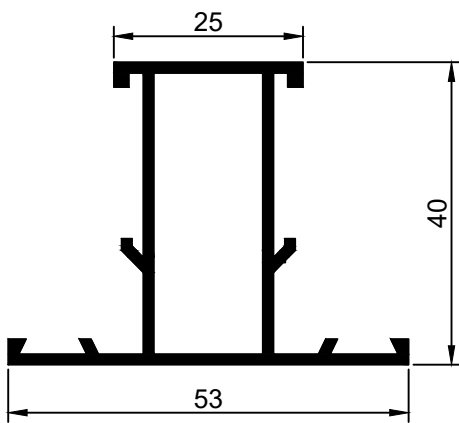
AN.08 *Aro Fixo*



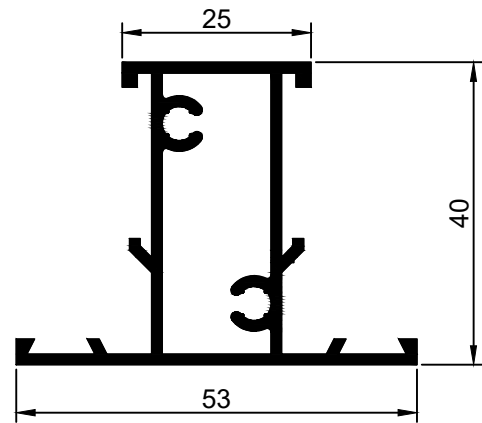
AN.74 *Aro Fixo*



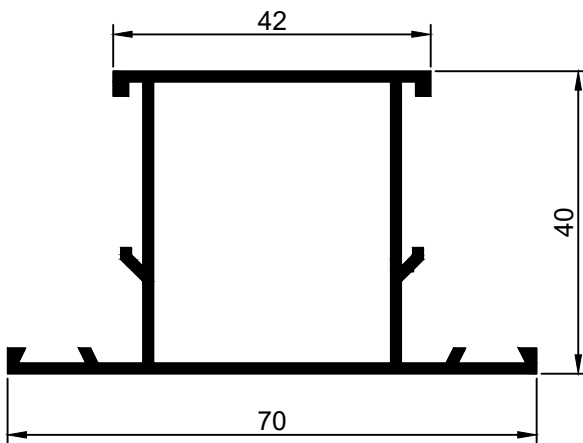
AN.12 Travessa



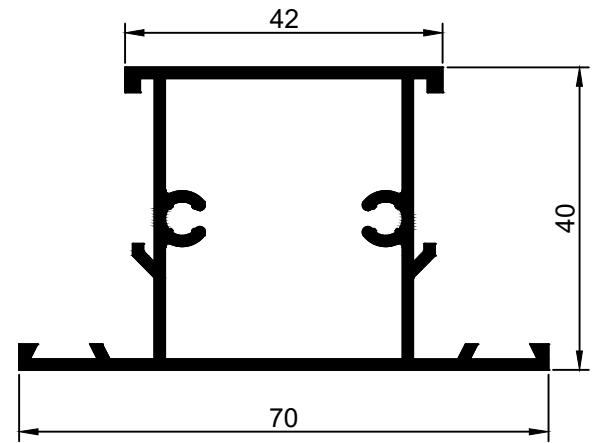
AN.14 Travessa



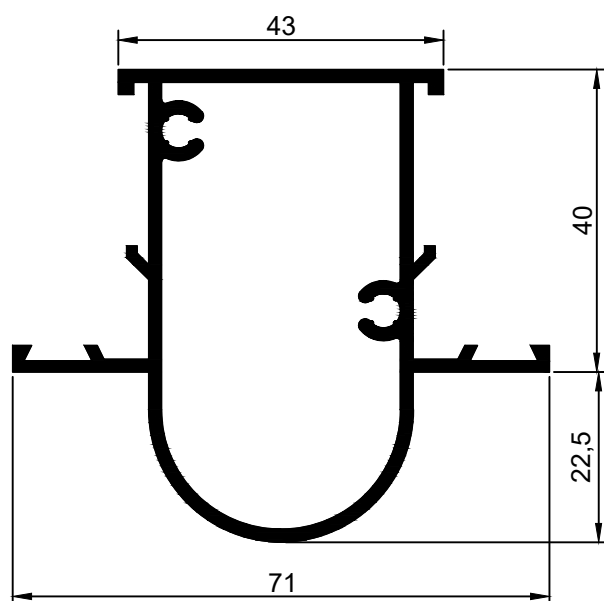
AN.11 Travessa



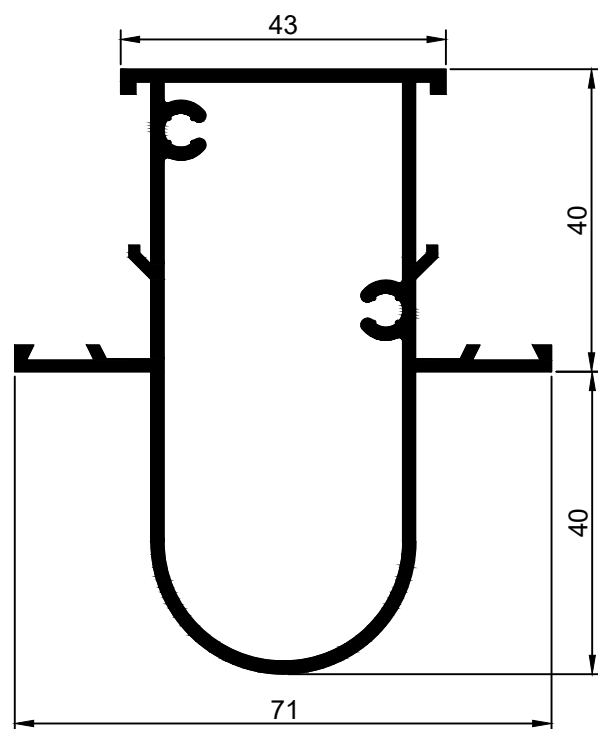
AN.13 Travessa



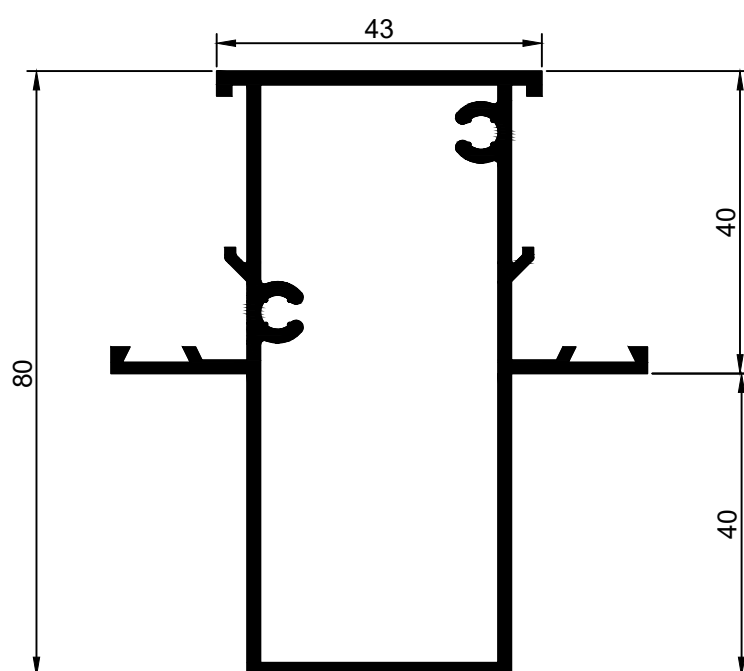
AN.17 Montante



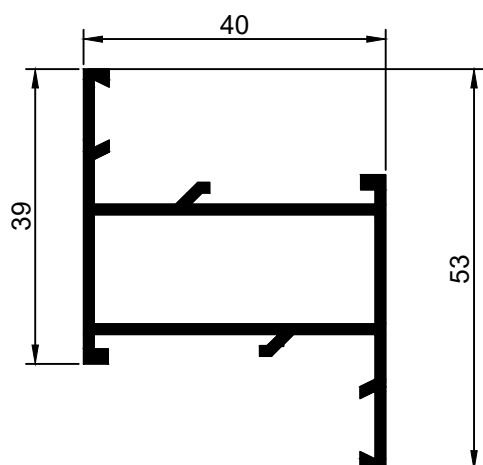
AN.18 Montante



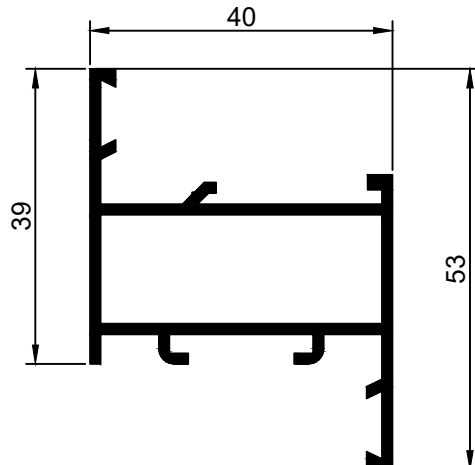
AN.19 Montante



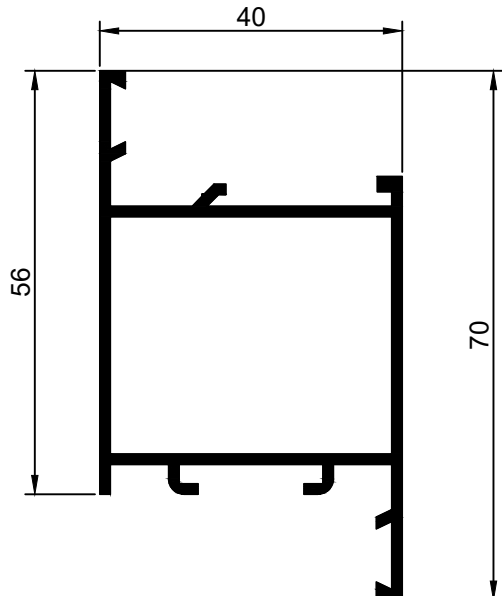
AN.22 Aro Móvel



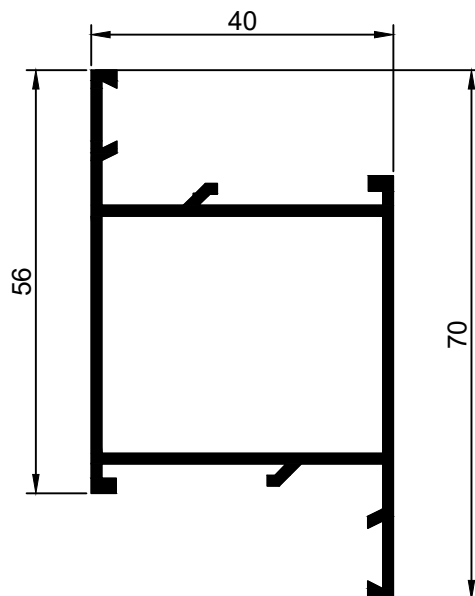
AN.21 Aro Móvel



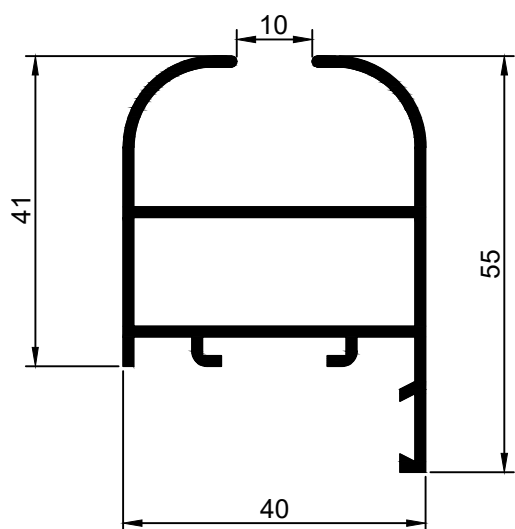
AN.31 Aro Móvel



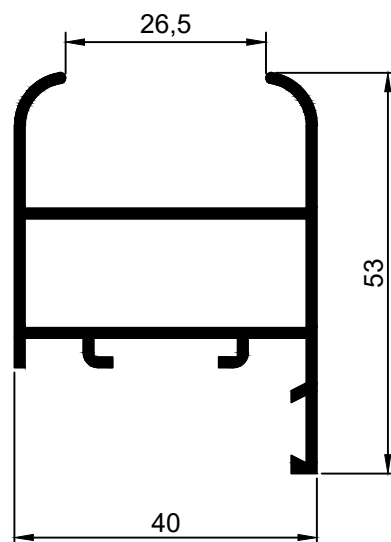
AN.32 Aro Móvel



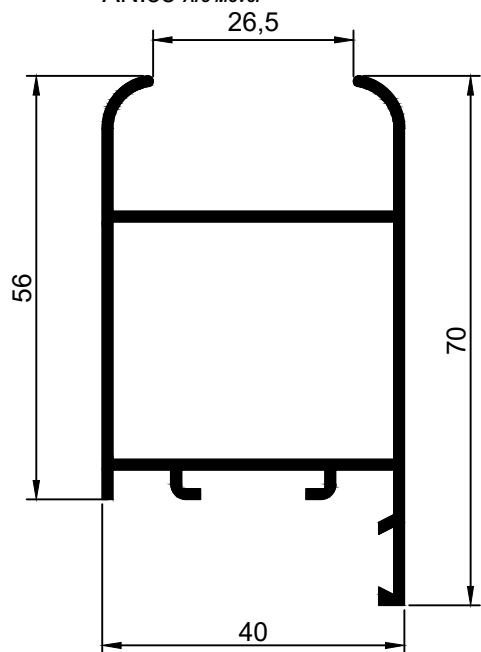
AN.29 Aro Móvel



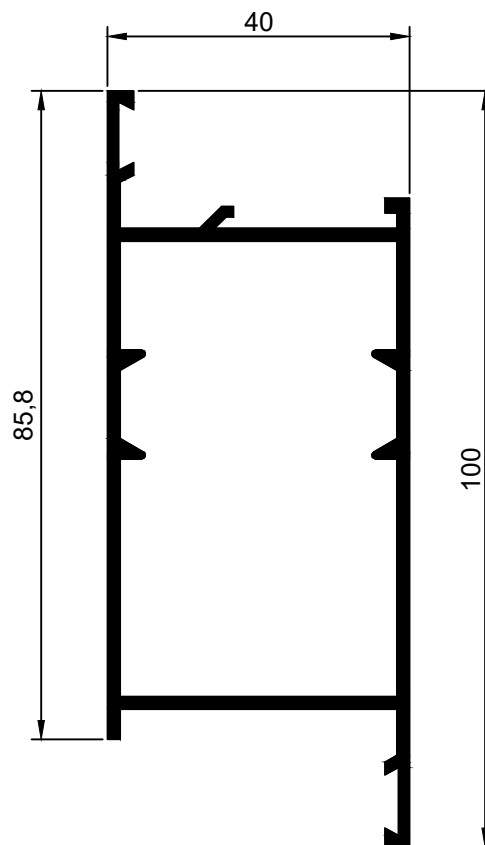
AN.28 Aro Móvel

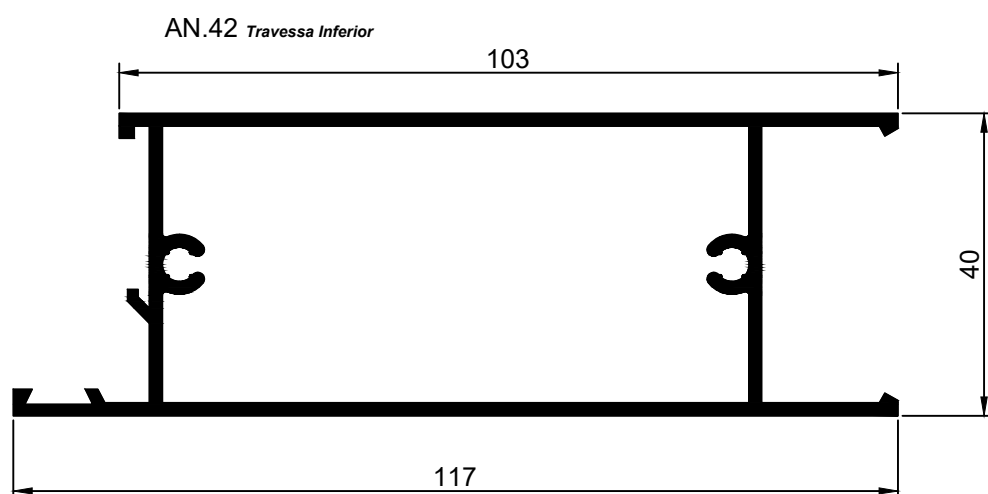
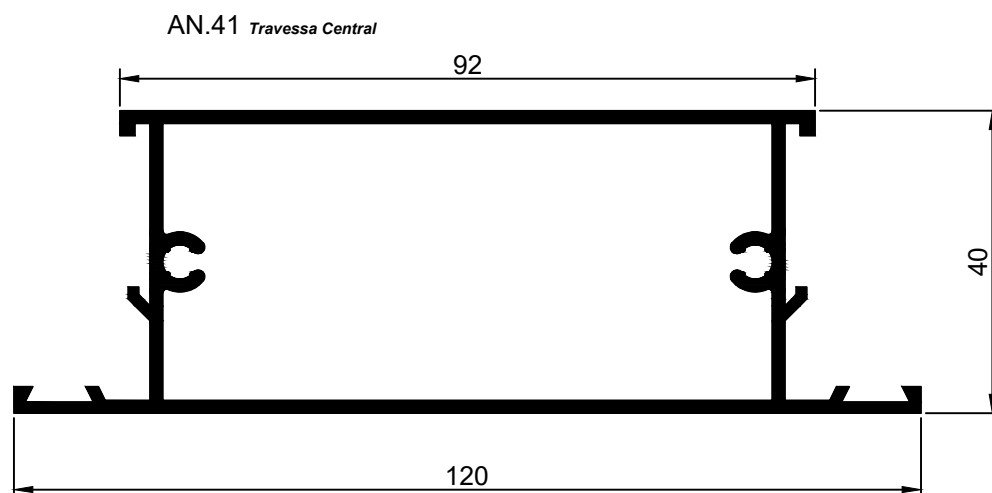


AN.38 Aro Móvel

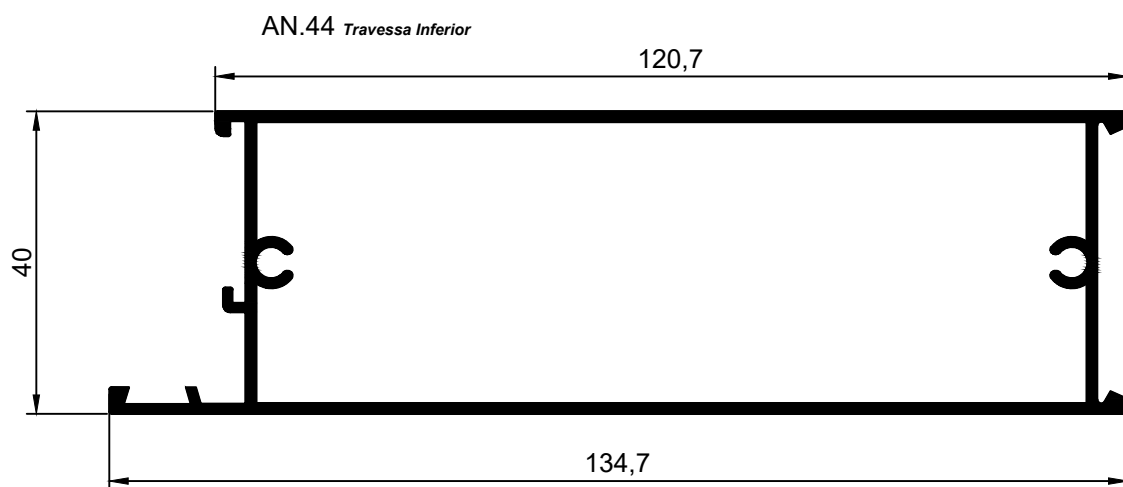
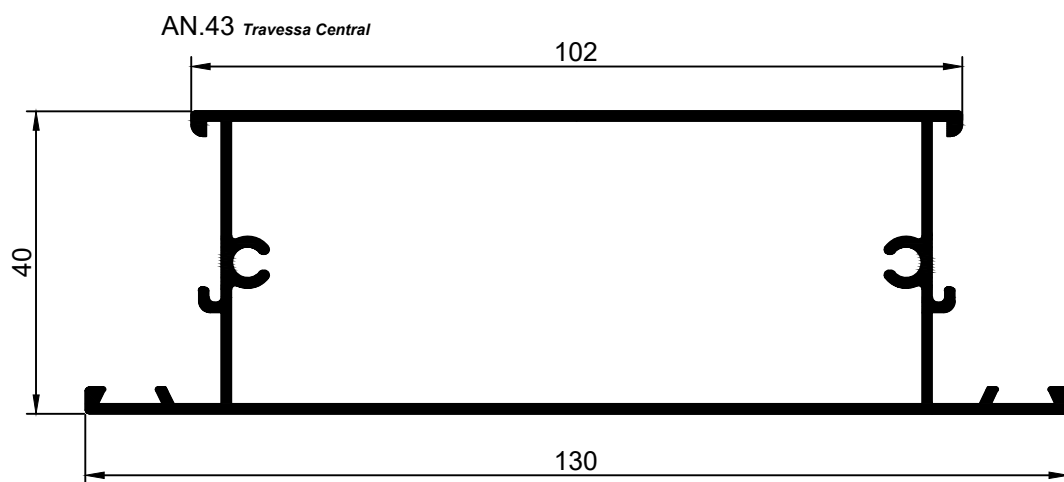


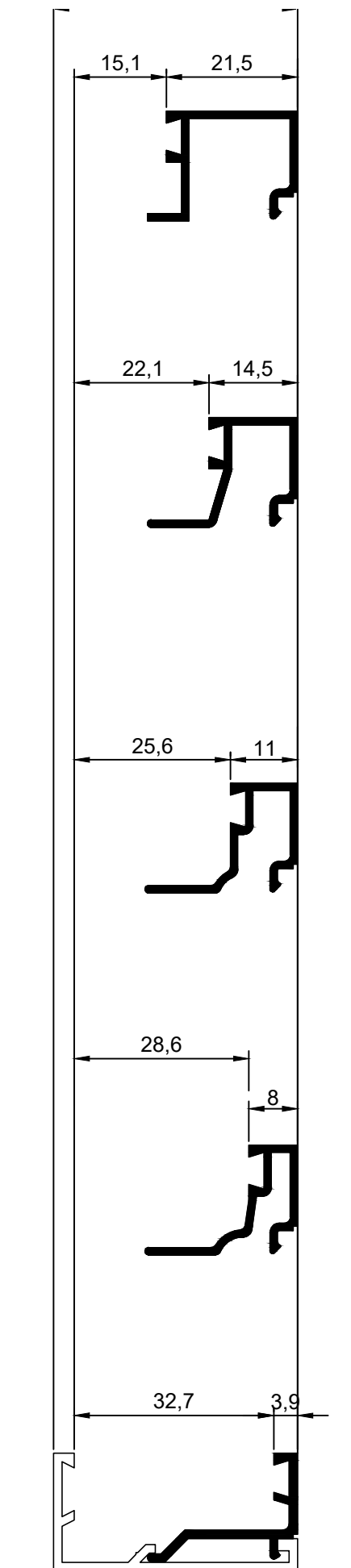
AN.37 Aro Móvel



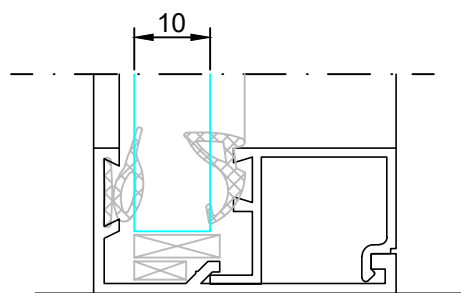




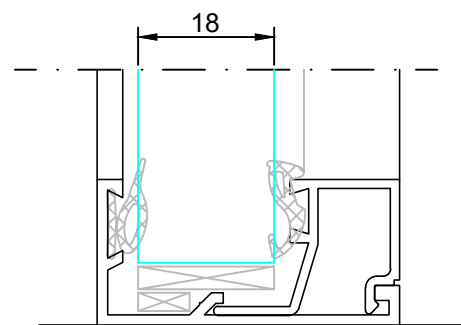




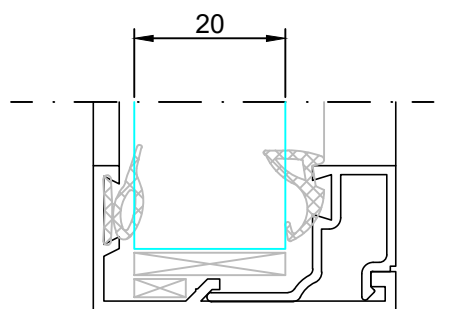
AN.56 *Bite*



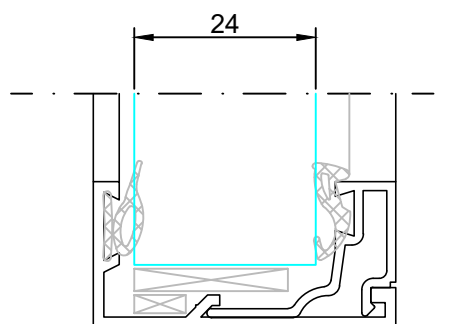
AN.54 *Bite*



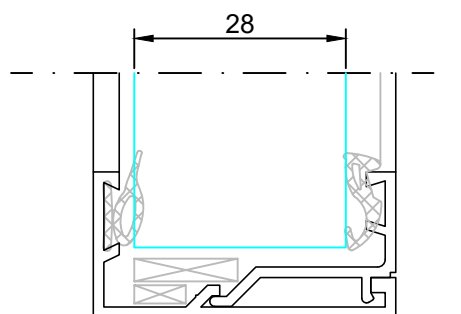
AN.53 *Bite*

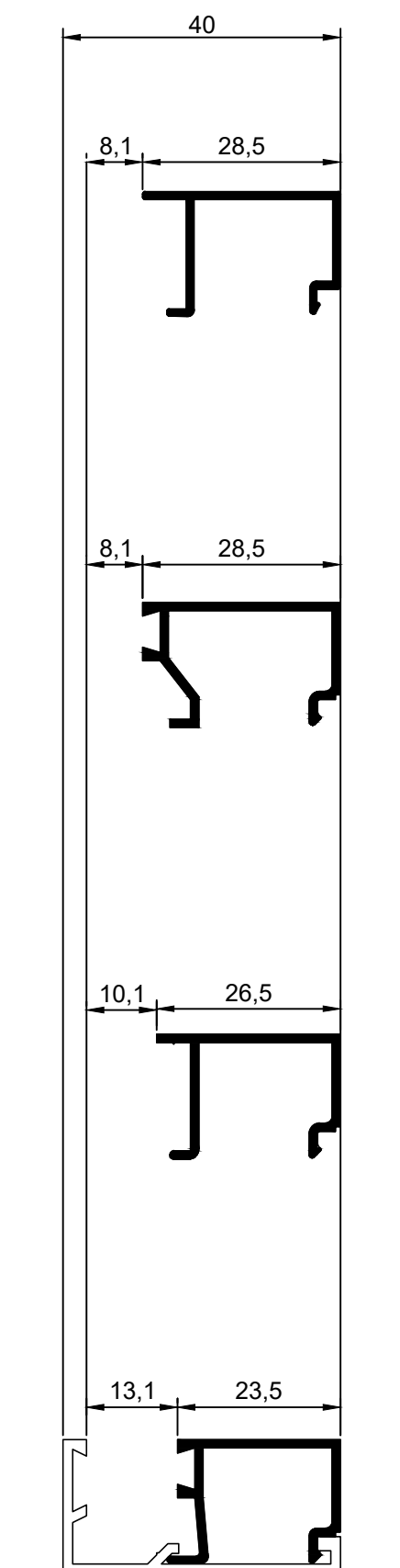


AN.51 *Bite*

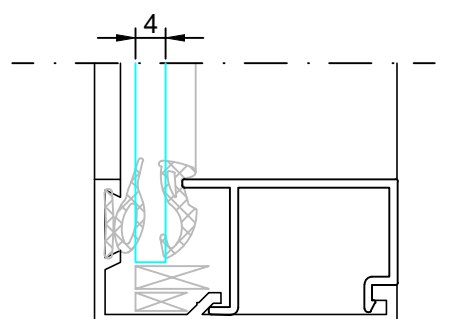


AN.50 *Bite*

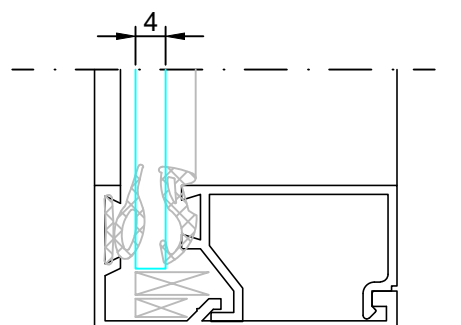




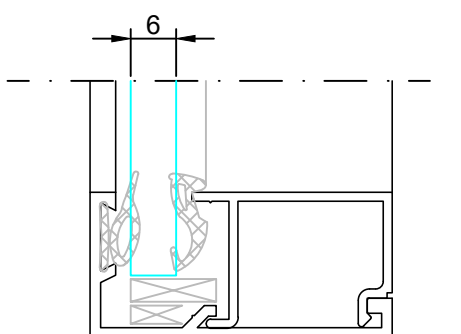
AN.60 *Bite*



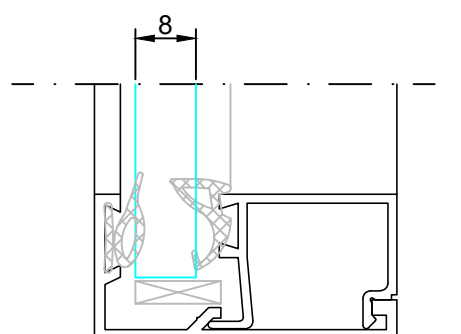
AN.59 *Bite*

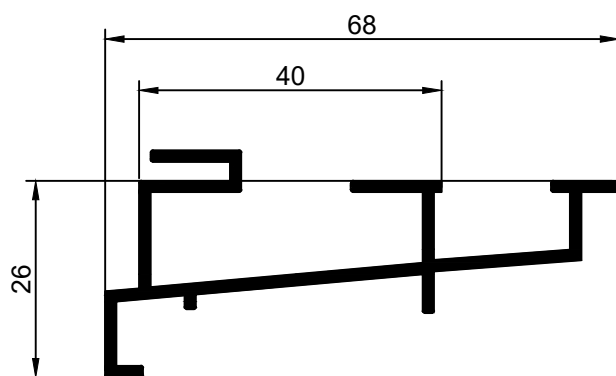


AN.57 *Bite*

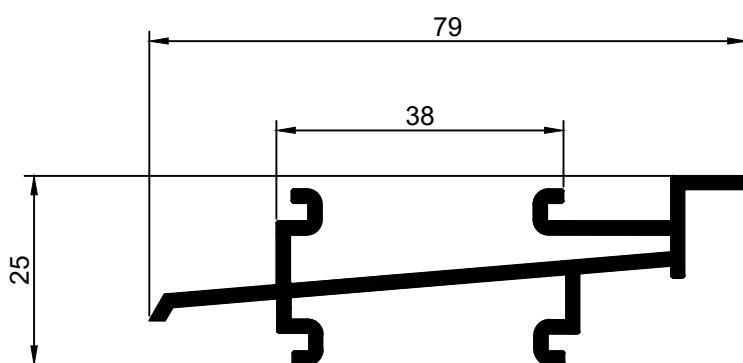


AN.55 *Bite*

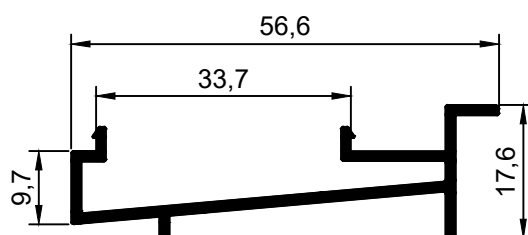




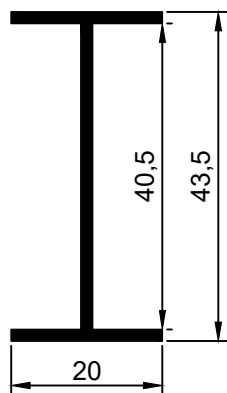
AN.83 *Soleira Condensação*



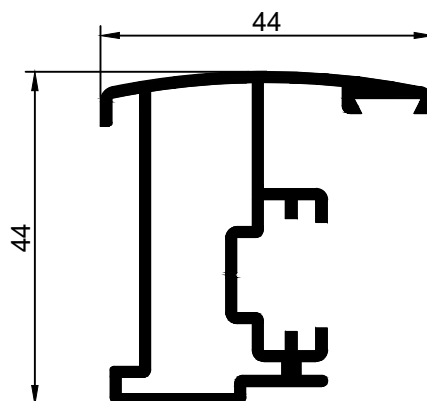
AN.81 *Soleira Condensação*



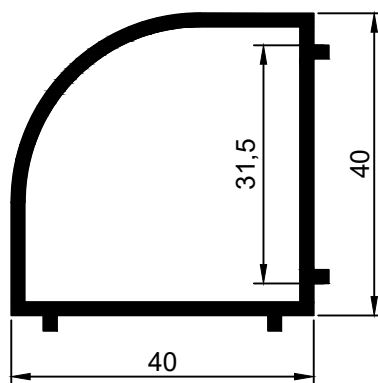
AQ.84 *Soleira Condensação*



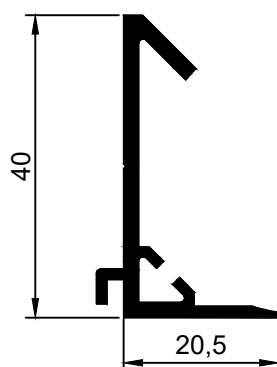
ST.84A *Perfil Ligação*



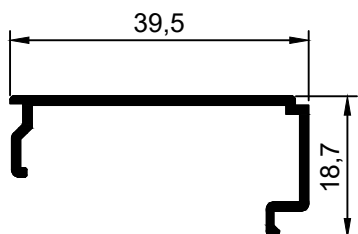
AN.80 *Inversor*



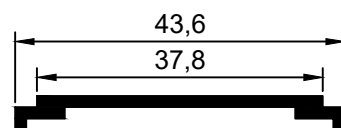
AN.72 *Perfil Ligação 90°*



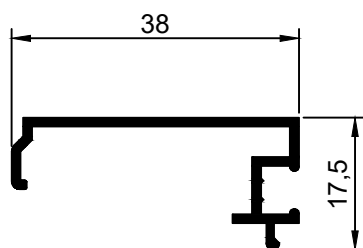
ST.82 *Perfil Ligação Angular*



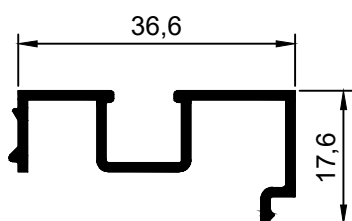
AN.95 *Bite P/ Beta*



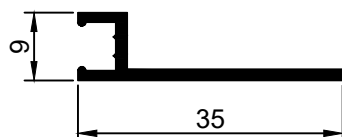
AN.95A *Bite P/ Beta*



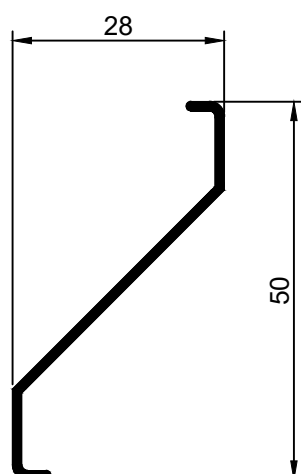
AN.97 *Bite P/ Lâmina - Z.14; Z.40; Z.35*



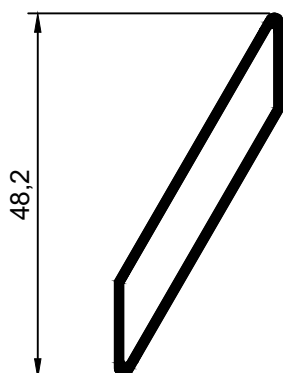
AN.96 *Bite P/ Lâmina - Z.35*



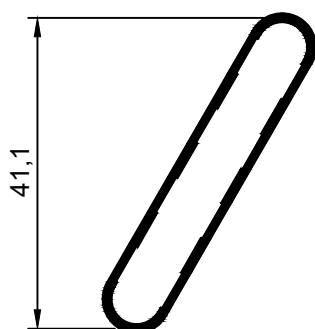
AN.100 *Bite P/ Lâmina PO.34 e aplicação de rede mosquiteira*



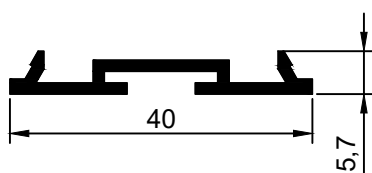
Z.14 *Lâmina*



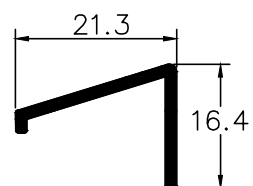
Z.40 *Lâmina*



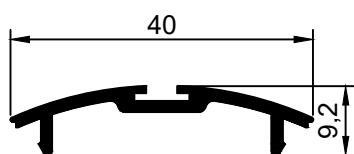
Z.35 *Lâmina*



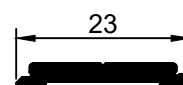
AN.93 *Bite Vedação Inferior*



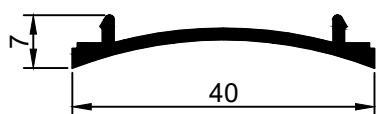
AQ.95 *Pingadeira Móvel*



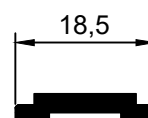
AN.92 *Bite Vedação Vai-Vém*



AN.98 *Vareta Cremone*  
(aplicação AN.22,32,37,11,12)



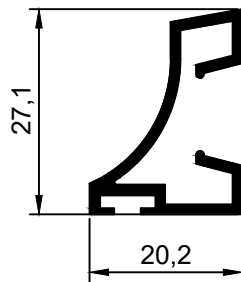
AN.92A *Bite Vedação Vai-Vém*



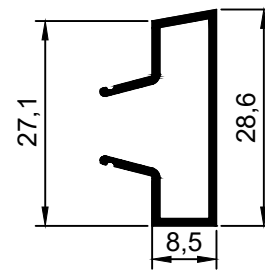
AN.94 *Vareta Cremone*  
(aplicação AN.21,31,28,29,38)



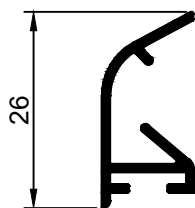
AQ.96 *Pingadeira*



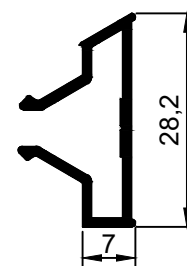
AQ.97 *Clip Pingadeira*



AQ.96A *Pingadeira*










AQ.97A *Clip Pingadeira*







# ACESSÓRIOS



ARTIGO	DESCRIÇÃO	APLICAÇÃO	
	<b>ESQ.421</b>  Esquadro 31,6x13,6mm	AN01	AN21
		AN02	AN22
		AN04	AN28
		AN08	AN29
		AN10	
		AN12	
	<b>ESQ.406</b>  Esquadro 36x30,5mm	AN03	AN38
		AN05	
		AN06	
		AN11	
		AN31	
		AN32	
	<b>ESQ.092P</b>  Esquadro Pequeno Misto	AN01	AN21
		AN02	AN22
		AN04	AN28
		AN08	AN29
		AN10	
		AN12	
	<b>ESQ.093G</b>  Esquadro Grande Misto	AN03	AN38
		AN05	
		AN06	
		AN11	
		AN31	
		AN32	
	<b>ESQ UNS40P</b>  Esquadro União Pequeno	AN12	
	<b>ESQ UNS40G</b>  Esquadro União Grande	AN11	
	<b>VD 200890</b>  Vedante Base Rígida 7,8	TODOS OS PERFIS	

ARTIGO	DESCRIÇÃO	APLICAÇÃO
	<b>DOB D1010</b> Dobradiça Deslizante	TODOS OS PERFIS
	<b>DOB D1010.3</b> Dobradiça Deslizante Tripla	TODOS OS PERFIS
	<b>DOB D10301</b> Dobradiça Deslizante 6000/AN/3F	AN80
	<b>KIT 4020Z2H</b> Kit 2F	
	<b>FECHO 49041</b> Fecho CE Pequeno 2ªFolha Zamak	
	<b>FECHO 49048</b> Fecho CE Medio 2ªFolha Zamak	
	<b>FECHO 49054</b> Fecho CE Grande 2ªFolha Zamak	

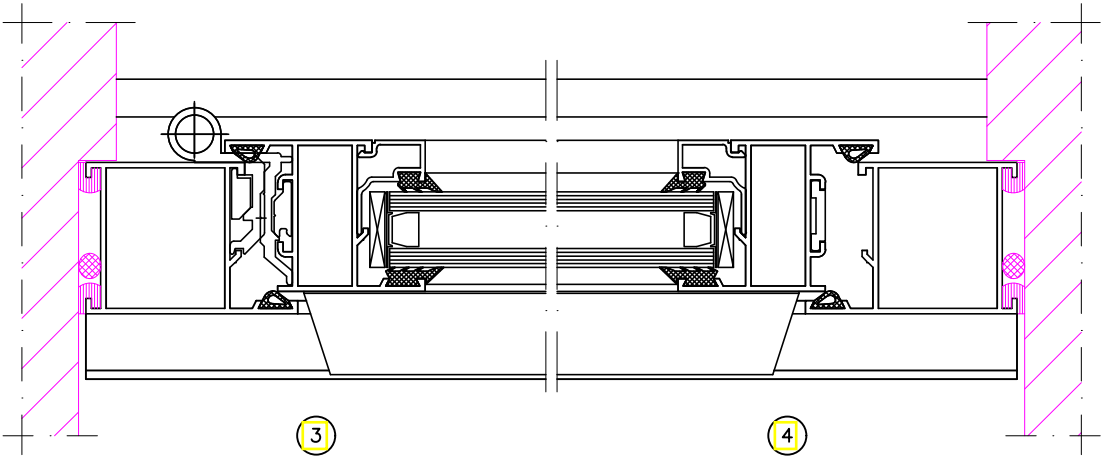
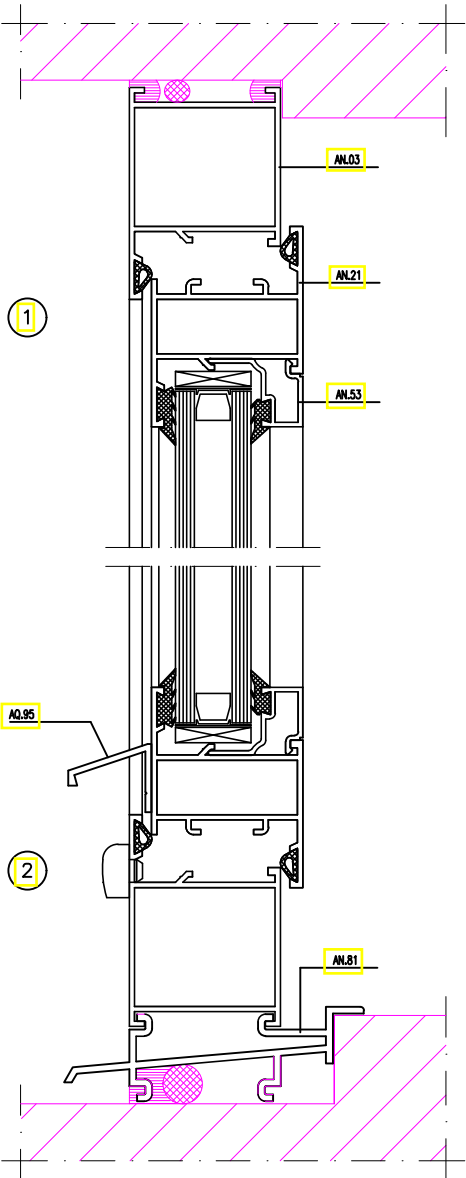
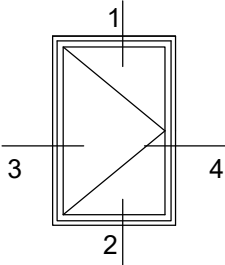
ARTIGO	DESCRIÇÃO	APLICAÇÃO
	<p><b>FECHA 6FAE630G62801</b> Fechadura Prumo 730/30 c/cilindro</p> <p><b>FECHA 6FAE630062801</b> Fechadura Prumo 730/35 c/cilindro</p>	
	<p><b>FECHA 6FAE67L062801</b></p> <p>Fechadura Tripla 755/30 c/cilindro Fechadura Tripla 755/35 c/cilindro</p>	
	<p><b>FECHO D6030</b></p> <p>Fecho Bandeira</p>	
	<p><b>JN D7001</b></p> <p>Jogos Nadir</p>	

ARTIGO	DESCRIÇÃO	APLICAÇÃO
	<b>COMP D40021</b> Compasso Peq.Correr	
	<b>FECHO 01004</b> Fecho Cremone Nova 1004	
	<b>PUXADOR 02472410</b> Puxador Muleta (GS) Branco	
	<b>TOP AN80</b> Topo para AN 80	

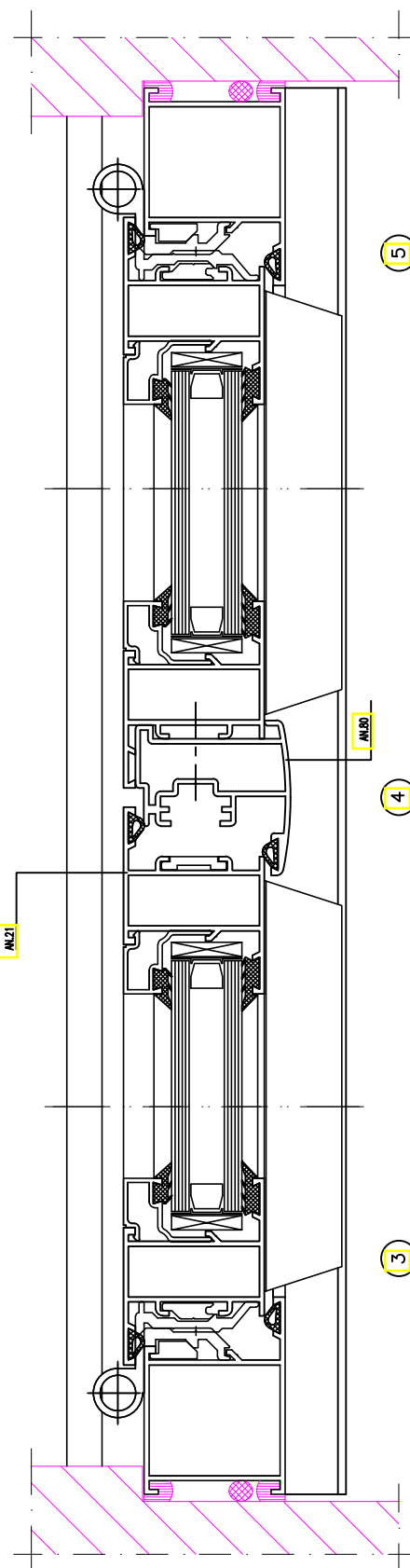
# FORMENORES TÉCNICOS



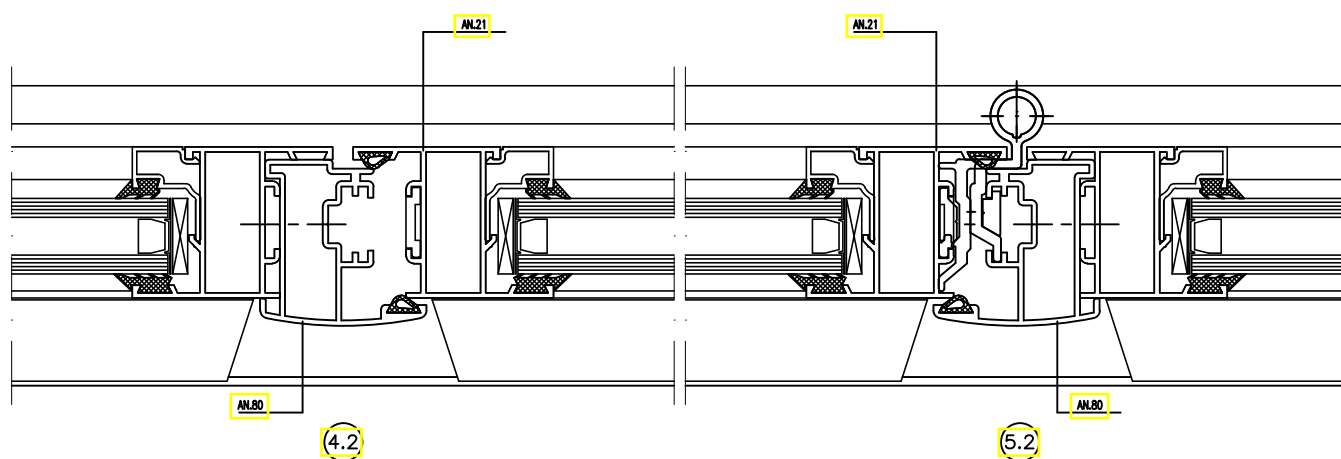
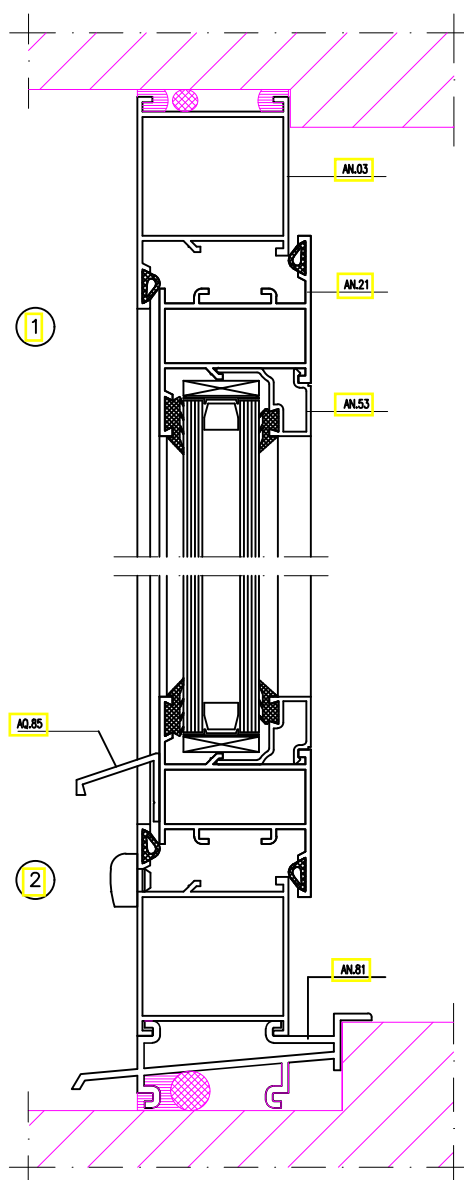
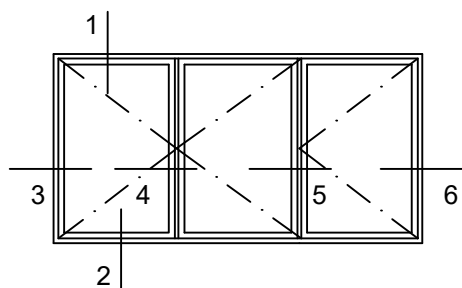
SÉRIE AN  
JANELA DE 1 FOLHA

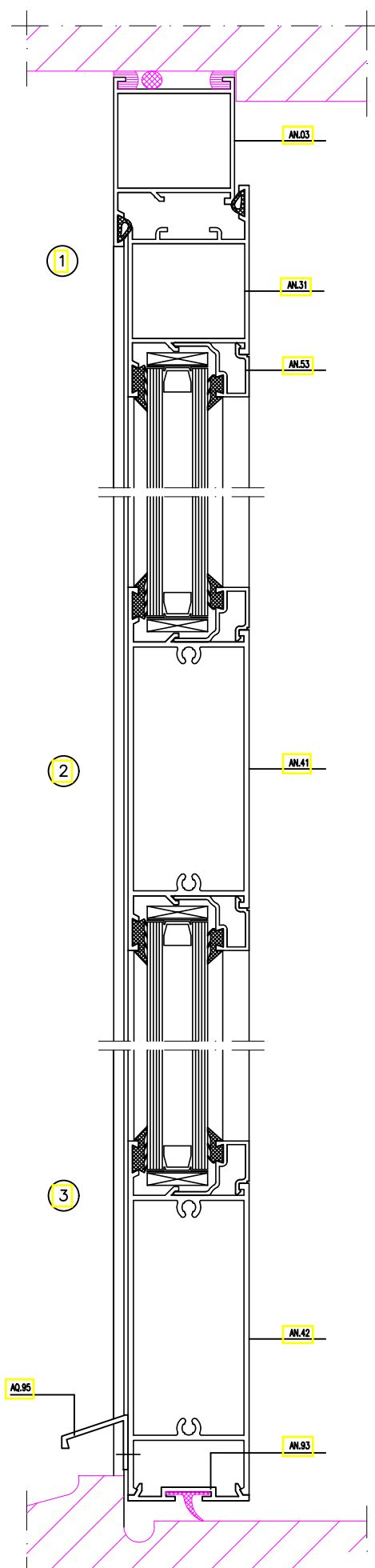




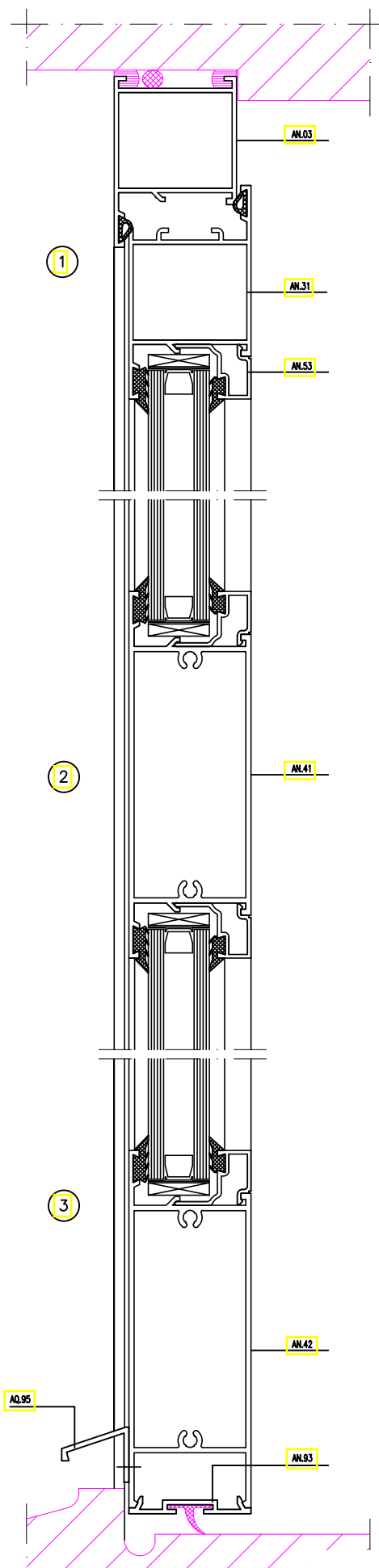
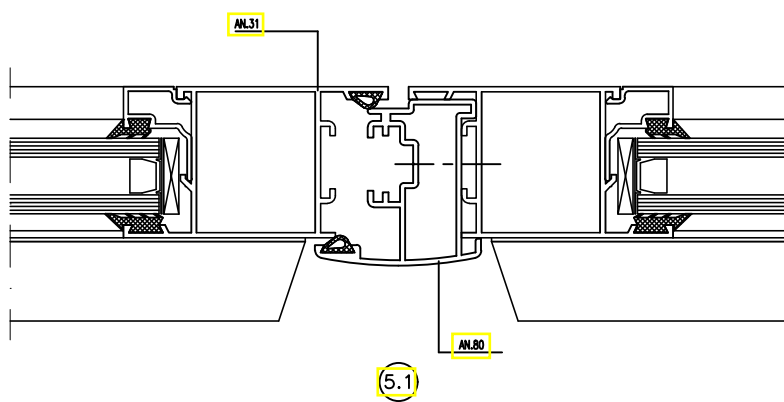
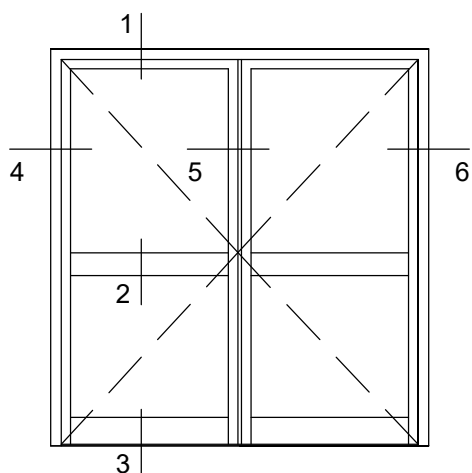


SÉRIE AN  
JANELA DE 3 FOLHAS

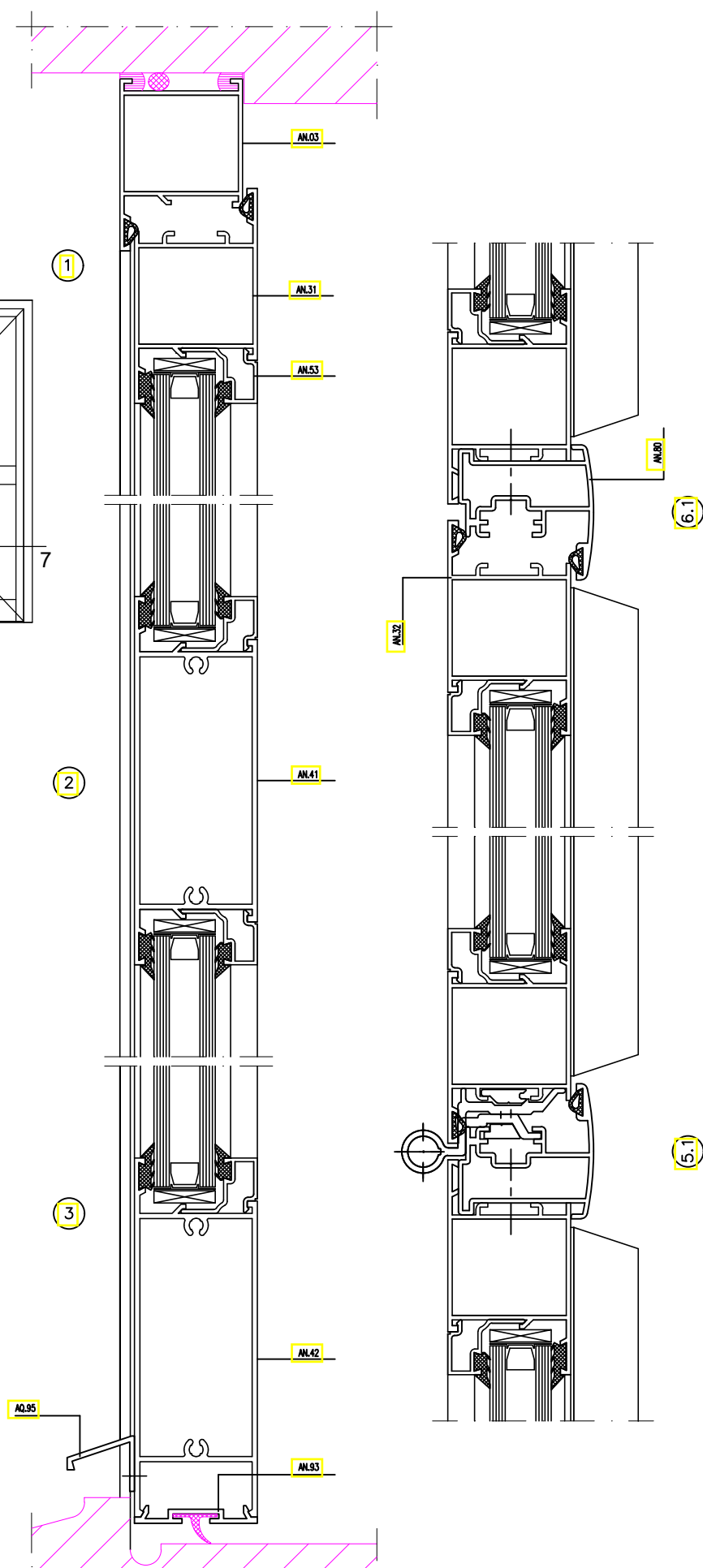
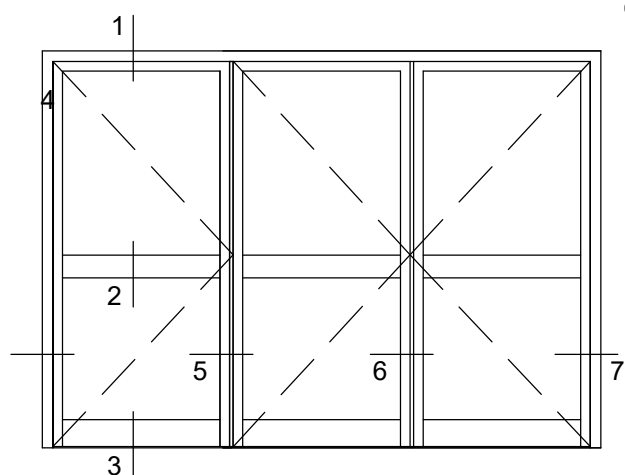




SÉRIE AN  
PORTA DE 2 FOLHAS



SÉRIE AN  
PORTA DE 3 FOLHAS



SÉRIE AN  
PORTA DE VAI-E-DEM

